

DOOR - FRONT

TABLE OF CONTENTS

	page		page
CHECK STRAP		INSTALLATION	15
REMOVAL	11	LATCH	
INSTALLATION	11	REMOVAL	15
DOOR		INSTALLATION	15
REMOVAL	12	ADJUSTMENTS	
INSTALLATION	12	DOOR LATCH	16
ADJUSTMENTS		LATCH STRIKER	
DOOR ADJUSTMENT	12	REMOVAL	16
DOOR GLASS		INSTALLATION	16
REMOVAL	12	LOCK CYLINDER	
INSTALLATION	12	REMOVAL	16
EXTERIOR HANDLE		INSTALLATION	17
REMOVAL	13	TRIM PANEL	
INSTALLATION	13	REMOVAL	17
GLASS RUN CHANNEL		INSTALLATION	17
REMOVAL	13	WATERDAM	
INSTALLATION	14	REMOVAL	17
HINGE		INSTALLATION	17
REMOVAL	14	WINDOW REGULATOR	
INSTALLATION	15	REMOVAL	18
INSIDE HANDLE ACTUATOR		INSTALLATION	18
REMOVAL	15		

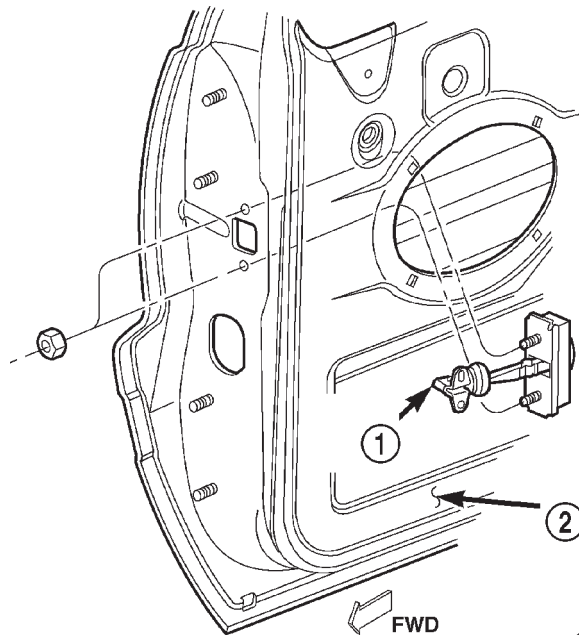
CHECK STRAP

REMOVAL

- (1) Remove the waterdam, refer to (Refer to 23 - BODY/DOOR - FRONT/WATERDAM - REMOVAL).
- (2) Remove speaker.
- (3) Remove screws attaching door check to A-pillar.
- (4) Remove nuts attaching door check to door (Fig. 1).
- (5) Remove door check through speaker location hole.

INSTALLATION

- (1) Position door check on door through speaker location hole (Fig. 1).
- (2) Install nuts attaching door check to door.
- (3) Install screws attaching door check to A-pillar.
- (4) Install speaker.
- (5) Install the waterdam, refer to (Refer to 23 - BODY/DOOR - FRONT/WATERDAM - INSTALLATION).



80b3c6ef

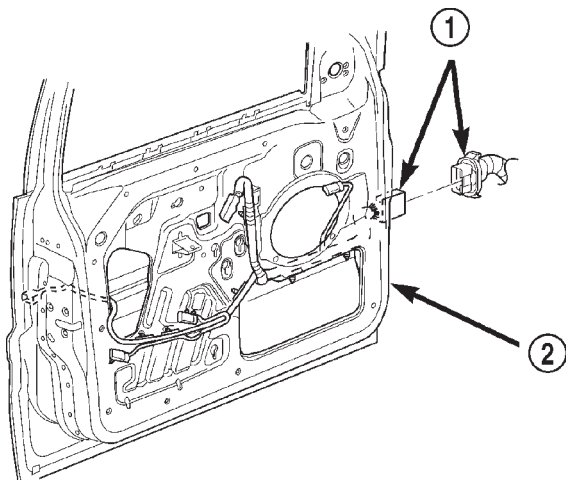
Fig. 1 Door Check

- 1 - DOOR CHECK
- 2 - FRONT DOOR

DOOR

REMOVAL

- (1) Disconnect front door harness connector (Fig. 2).
- (2) Support door with padded floor jack.
- (3) Remove retaining clips from hinge pins.
- (4) Tap out hinge pins.
- (5) Separate door from vehicle.



80b5cb4b

Fig. 2 Front Door Harness Connector

- 1 - HARNESS CONNECTOR
2 - DOOR

INSTALLATION

- (1) Position door at vehicle and align hinges.
- (2) Install hinge pins.
- (3) Install retaining clips for hinge pins.
- (4) Connect front door harness connector (Fig. 2).

ADJUSTMENTS

DOOR ADJUSTMENT

Minor adjustment for alignment of the door is made by moving the latch striker.

IN AND OUT

- (1) Loosen the latch striker.
- (2) Tap the latch striker inward if the door character line is outboard of the body character line or tap the latch striker outward if the door character line is inboard of the body character line.
- (3) Inspect the alignment. If correct, tighten striker to 28 N·m (21 ft. lbs.).

UP AND DOWN

- (1) Loosen the latch striker.
- (2) Tap the latch striker downward if the door character line is higher than the body character line

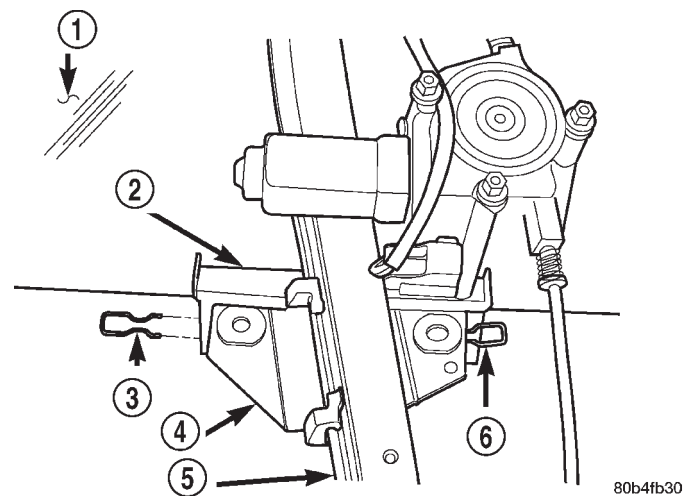
or tap the latch striker upward if the door character line is lower than the body character line.

- (3) Inspect the alignment. If correct, tighten to 28 N·m (21 ft. lbs.).

DOOR GLASS

REMOVAL

- (1) Locate glass to full down position.
- (2) Remove the waterdam, refer to (Refer to 23 - BODY/DOOR - FRONT/WATERDAM - REMOVAL).
- (3) Remove inner belt weatherstrip, refer to (Refer to 23 - BODY/WEATHERSTRIP/SEALS/FDR INNER BELT WEATHERSTRIP - REMOVAL).
- (4) Remove outer belt weatherstrip, refer to (Refer to 23 - BODY/WEATHERSTRIP/SEALS/FDR OUTER BELT WEATHERSTRIP - REMOVAL).
- (5) Locate glass to 3/4 up position.
- (6) Using a long flat blade or hook type tool, disengage clips (Fig. 3) attaching glass retainer to glass lift plate.
- (7) Carefully push bottom of glass panel outward to disengage glass retainer studs from lift plate (Fig. 4).
- (8) Lift glass upward and out of door.



80b4fb30

Fig. 3 Front Door Glass Clips

- 1 - GLASS
2 - RETAINER
3 - CLIP
4 - LIFT PLATE
5 - REGULATOR
6 - CLIP

INSTALLATION

- (1) Lower glass into position.
- (2) Carefully align glass retainer studs with lift plate and insert studs into lift plate.

DOOR GLASS (Continued)

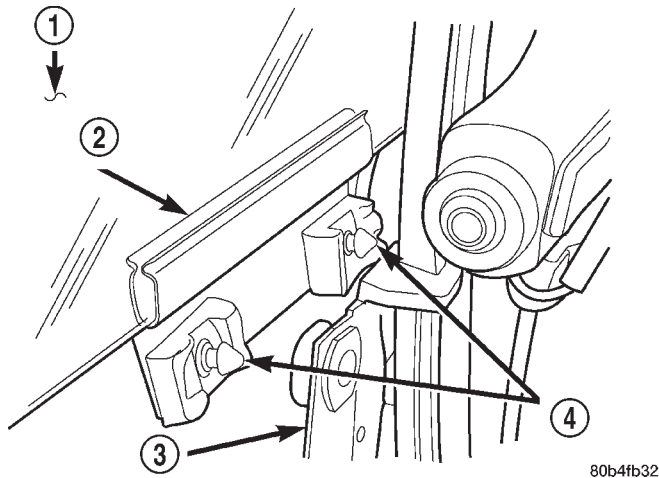


Fig. 4 Front Door Glass Retainer

- 1 - GLASS
- 2 - RETAINER
- 3 - LIFT PLATE
- 4 - STUD

(3) Engage clips attaching glass retainer to glass lift plate.

(4) Locate glass to full down position.

(5) Install outer belt weatherstrip, (Refer to 23 - BODY/WEATHERSTRIP/SEALS/FDR OUTER BELT WEATHERSTRIP - INSTALLATION).

(6) Install inner belt weatherstrip, (Refer to 23 - BODY/WEATHERSTRIP/SEALS/FDR INNER BELT WEATHERSTRIP - INSTALLATION).

(7) Install waterdam, refer to (Refer to 23 - BODY/DOOR - FRONT/WATERDAM - INSTALLATION).

EXTERIOR HANDLE

REMOVAL

(1) Remove glass run channel, refer to (Refer to 23 - BODY/DOOR - FRONT/GLASS RUN CHANNEL - REMOVAL).

(2) Disconnect lock cylinder to latch rod.

(3) Disconnect outside handle to latch rod

(4) Remove fasteners attaching outside handle to door (Fig. 5).

(5) Remove outside handle from door.

(6) Disconnect anti-theft harness connector, if equipped.

(7) Separate outside handle from vehicle.

INSTALLATION

(1) Position outside handle at door (Fig. 5).

(2) Connect anti-theft harness connector, if equipped.

(3) Position outside handle in door.

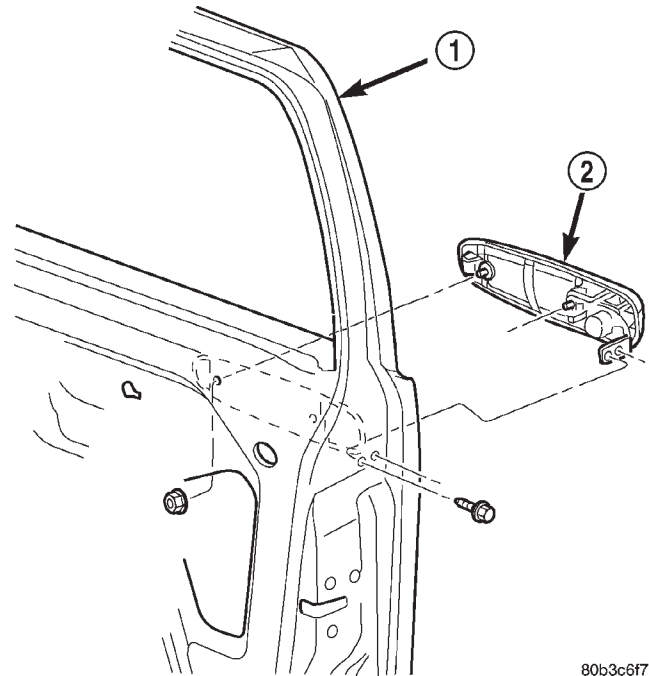


Fig. 5 Front Door Outside Handle

- 1 - DOOR
- 2 - OUTSIDE HANDLE

(4) Install fasteners attaching outside handle to door.

(5) Connect outside handle to latch rod

(6) Connect lock cylinder to latch rod.

(7) Install glass run channel, refer to (Refer to 23 - BODY/DOOR - FRONT/GLASS RUN CHANNEL - INSTALLATION).

GLASS RUN CHANNEL

REMOVAL

NOTE: Only the rearward glass run channel is serviceable.

(1) Remove the waterdam, refer to (Refer to 23 - BODY/DOOR - FRONT/WATERDAM - REMOVAL).

(2) Remove inner belt weatherstrip, refer to (Refer to 23 - BODY/WEATHERSTRIP/SEALS/FDR INNER BELT WEATHERSTRIP - REMOVAL).

(3) Remove outer belt weatherstrip, refer to (Refer to 23 - BODY/WEATHERSTRIP/SEALS/FDR OUTER BELT WEATHERSTRIP - REMOVAL).

(4) Remove bolt attaching run channel to inner door panel (Fig. 6).

(5) Peel back glass run channel weatherstrip on rear run channel.

(6) Pull glass run channel downward to separate from door.

GLASS RUN CHANNEL (Continued)

(7) Remove glass run channel from door.

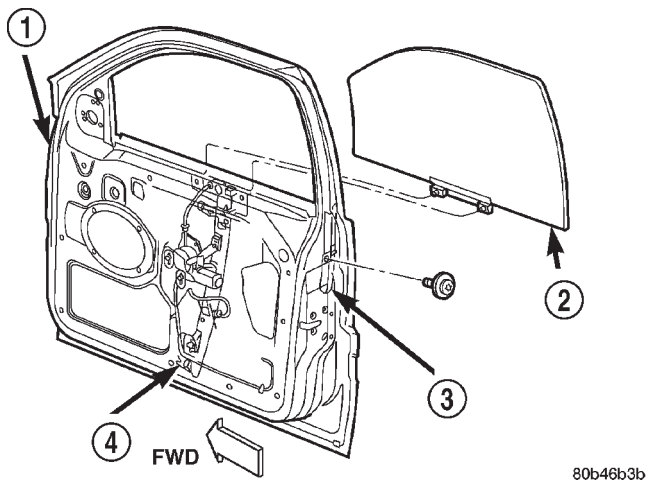


Fig. 6 Front Door Glass Run Channel

- 1 - DOOR
- 2 - GLASS
- 3 - GLASS RUN CHANNEL
- 4 - REGULATOR

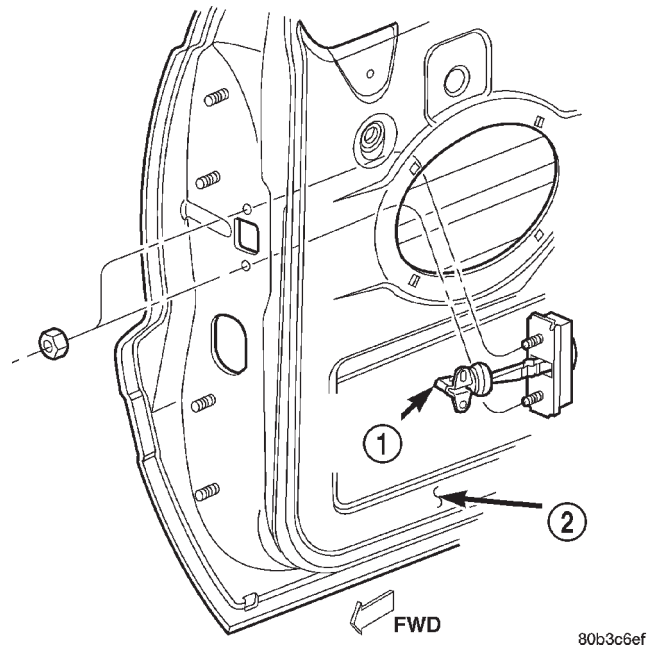


Fig. 7 Front Door Check

- 1 - DOOR CHECK
- 2 - FRONT DOOR

INSTALLATION

- (1) Position glass run channel in door (Fig. 6).
- (2) Align glass run channel with door frame run channel and slide channel upward to secure door.
- (3) Press glass run channel weatherstrip into rear run channel.
- (4) Install bolt attaching run channel to inner door panel.
- (5) Install outer belt weatherstrip, (Refer to 23 - BODY/WEATHERSTRIP/SEALS/FDR OUTER BELT WEATHERSTRIP - INSTALLATION).
- (6) Install inner belt weatherstrip, (Refer to 23 - BODY/WEATHERSTRIP/SEALS/FDR INNER BELT WEATHERSTRIP - INSTALLATION).
- (7) Install the waterdam, (Refer to 23 - BODY/DOOR - FRONT/WATERDAM - INSTALLATION).

HINGE

REMOVAL

- (1) Open and support door.
- (2) Using a wax pencil, or other suitable device, reference mark the hinge placement
- (3) Disconnect the door wire harness.
- (4) Remove the door check from the "A" pillar (Fig. 7).
- (5) Remove the fasteners retaining the door hinge to the door (Fig. 8).
- (6) Remove the door.
- (7) Remove the hinge from the "A" pillar.

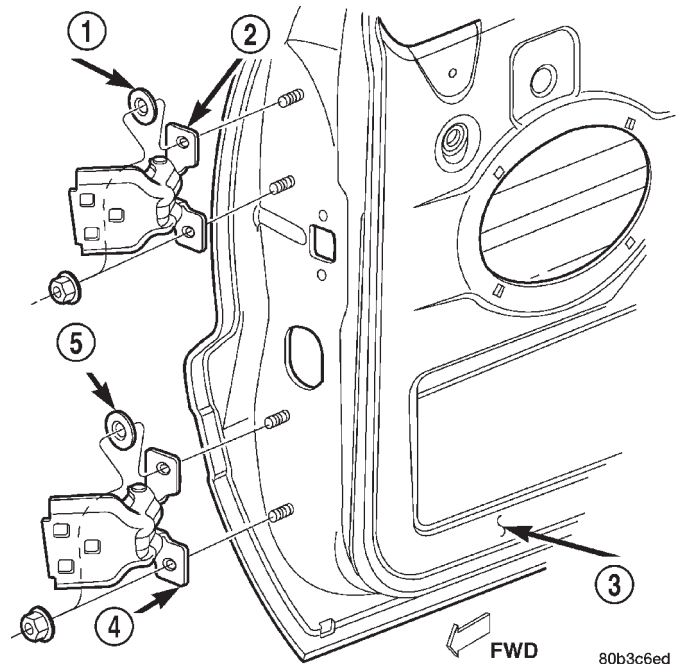


Fig. 8 Front Door Hinges

- 1 - WASHER
- 2 - UPPER HINGE
- 3 - FRONT DOOR
- 4 - LOWER HINGE
- 5 - WASHER

HINGE (Continued)

INSTALLATION

- (1) Position hinge on "A" pillar. (Use 3M® Fast and Firm or equivalent on the hinge to body mating surface as a sealant.)
- (2) Install hinge to body bolts, but do not tighten.
- (3) Align the hinge to the reference marks and torque the bolts to 35N·m (26 ft. lbs.).
- (4) Install the door on the hinge and align with the reference marks.
- (5) Tighten the door to hinge fasteners.
- (6) For adjustment see door adjustment procedure.

INSIDE HANDLE ACTUATOR

REMOVAL

- (1) Remove door trim panel, refer to (Refer to 23 - BODY/DOOR - FRONT/TRIM PANEL - REMOVAL).
- (2) Disconnect latch and lock rods from inside handle actuator.
- (3) Remove screws attaching inside handle actuator to trim panel (Fig. 9).
- (4) Separate inside handle actuator from trim panel.

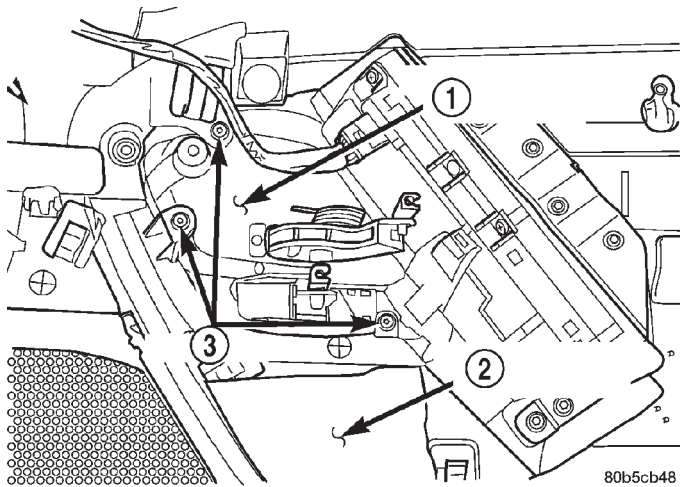


Fig. 9 Front Door Inside Handle Actuator

- 1 - INSIDE HANDLE ACTUATOR
- 2 - DRIVER'S DOOR TRIM PANEL
- 3 - SCREW

INSTALLATION

- (1) Position inside handle actuator in trim panel.
- (2) Install screws attaching inside handle actuator to trim panel (Fig. 9).
- (3) Connect latch and lock rods to inside handle actuator.
- (4) Install door trim panel, refer to (Refer to 23 - BODY/DOOR - FRONT/TRIM PANEL - INSTALLATION).

LATCH

REMOVAL

- (1) Remove glass run channel, refer to (Refer to 23 - BODY/DOOR - FRONT/GLASS RUN CHANNEL - REMOVAL).
- (2) Remove screws attaching door latch to door (Fig. 10).
- (3) Disconnect all rods from door latch.
- (4) Disconnect wire harness connector, if equipped.
- (5) Separate door latch from door.

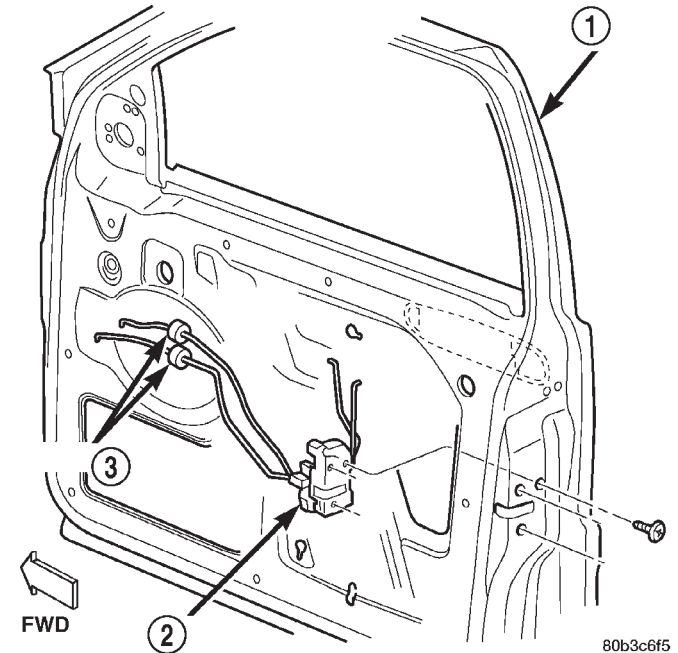


Fig. 10 Door Latch

- 1 - DOOR
- 2 - LATCH
- 3 - ISOLATOR

INSTALLATION

- (1) Position door latch at door.
- (2) Connect wire harness connector, if equipped.
- (3) Connect all rods to door latch.
- (4) Install screws attaching door latch to door. Tighten screws to 10 N·m (7 ft. lbs.) torque (Fig. 10).
- (5) Install glass run channel, refer to (Refer to 23 - BODY/DOOR - FRONT/GLASS RUN CHANNEL - INSTALLATION).

LATCH (Continued)

ADJUSTMENTS

DOOR LATCH

DOOR LATCH ADJUSTMENT

- (1) Locate access hole (Fig. 11).
- (2) Insert a 5/32-inch hex-wrench through hole and into adjustment screw. Loosen screw.
- (3) Operate outside handle button several times to release any restriction because of mis-alignment.
- (4) Tighten adjustment screw to 3 N·m (30 in-lbs) torque.
- (5) Test handle button and lock cylinder for proper operation.

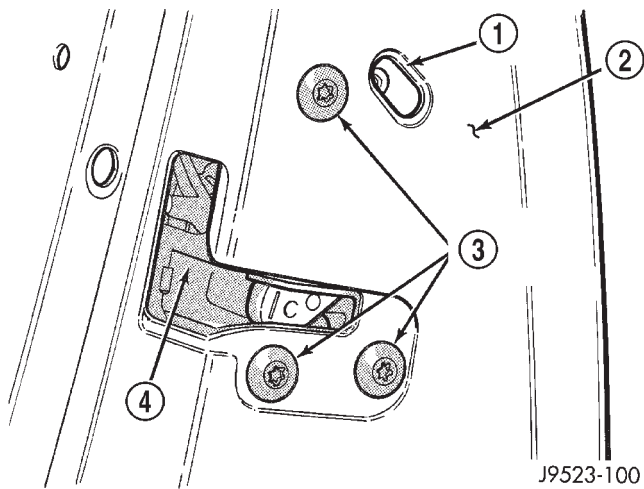


Fig. 11 Door Latch Adjustment

- 1 - ACCESS HOLE
- 2 - DOOR
- 3 - LATCH MOUNTING BOLTS
- 4 - LATCH

LATCH STRIKER

REMOVAL

- (1) Remove screws attaching striker to B-pillar.
- (2) Separate striker and spacer from B-pillar (Fig. 12).

INSTALLATION

- (1) Position striker and spacer on B-pillar.
- (2) Install screws attaching striker to B-pillar. Tighten screws to 28 N·m (20 ft. lbs.) torque (Fig. 12).

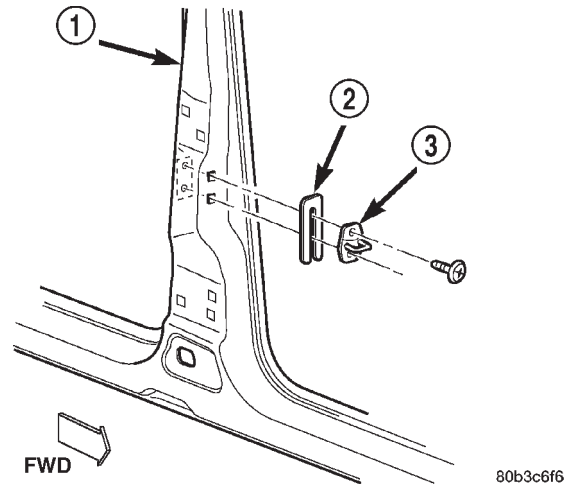


Fig. 12 Front Door Latch Striker

- 1 - B-PILLAR
- 2 - SPACER
- 3 - STRIKER

LOCK CYLINDER

REMOVAL

- (1) Remove outside door handle, refer to (Refer to 23 - BODY/DOOR - FRONT/EXTERIOR HANDLE - REMOVAL).
- (2) Remove screw securing lock cylinder retainer to outside door handle (Fig. 13).
- (3) Separate lock cylinder from door handle.
- (4) Disconnect lock cylinder switch, if equipped.

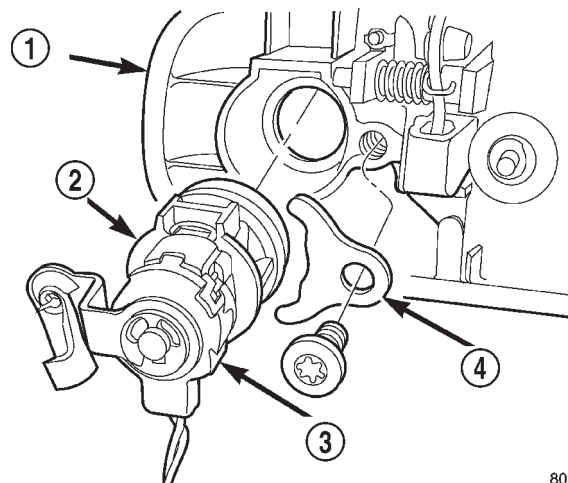


Fig. 13 Front Door Lock Cylinder

- 1 - OUTSIDE DOOR HANDLE
- 2 - LOCK CYLINDER
- 3 - ANTI-THEFT SWITCH
- 4 - RETAINER

LOCK CYLINDER (Continued)

INSTALLATION

- (1) Connect lock cylinder switch, if equipped.
- (2) Position lock cylinder in door handle.
- (3) Position lock cylinder retainer and install screw (Fig. 13).
- (4) Install outside door handle, refer to (Refer to 23 - BODY/DOOR - FRONT/EXTERIOR HANDLE - INSTALLATION).

TRIM PANEL

REMOVAL

- (1) Remove trim plug from mirror flag bezel.
- (2) Remove screws attaching trim panel to door (Fig. 14).
- (3) Using trim remover (C-4829 or equivalent), detach trim panel perimeter push-in fasteners from door inner panel.
- (4) Lift trim panel upward and separate from door.
- (5) If equipped, disconnect harness connectors for power accessories.
- (6) Disconnect latch rods from inside handle actuator.
- (7) Separate trim panel from vehicle.

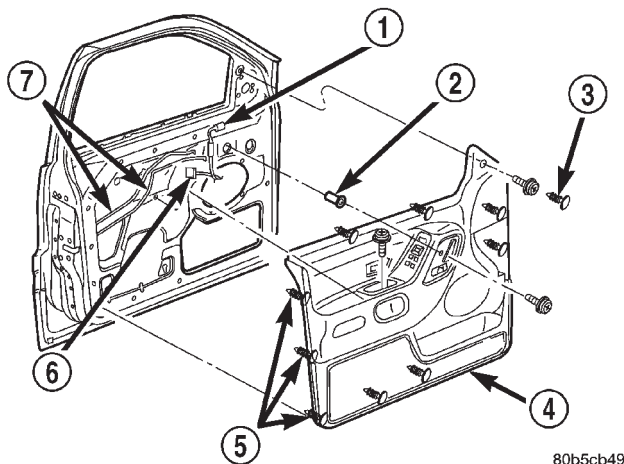


Fig. 14 Front Door Trim Panel

- 1 - HARNESS CONNECTOR
- 2 - NUTSERT
- 3 - TRIM PLUG
- 4 - TRIM PANEL
- 5 - PUSH-IN FASTENER
- 6 - HARNESS CONNECTOR
- 7 - LATCH RODS

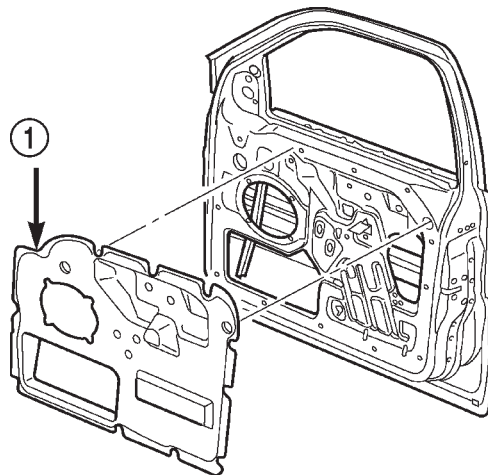
INSTALLATION

- (1) Connect latch rods to inside handle actuator.
- (2) If equipped, connect harness connectors to power accessories.
- (3) Position trim panel on door inner panel.
- (4) Press trim panel push-in fasteners inward around perimeter of door.
- (5) Install screws attaching trim panel to door (Fig. 14).
- (6) Install trim plug in mirror flag bezel.

WATERDAM

REMOVAL

- (1) Remove door trim panel, refer to (Refer to 23 - BODY/DOOR - FRONT/TRIM PANEL - REMOVAL).
- (2) Peel the waterdam from door.
- (3) Route all harnesses and linkage rods through waterdam as necessary.
- (4) Separate waterdam from door (Fig. 15).



80b46b2f

Fig. 15 Front Door Waterdam

- 1 - INSULATOR PAD

INSTALLATION

- (1) Waterdam contact surface must be free of contaminants. Clean as necessary.
- (2) Route all harnesses and linkage rods through waterdam as necessary.
- (3) Position waterdam on door and align all holes.
- (4) Press waterdam on door (Fig. 15).
- (5) Install door trim panel, refer to (Refer to 23 - BODY/DOOR - FRONT/TRIM PANEL - INSTALLATION).

WINDOW REGULATOR

REMOVAL

- (1) Remove front door glass, refer to (Refer to 23 - BODY/DOOR - FRONT/DOOR GLASS - REMOVAL).
- (2) Loosen bolts attaching regulator to inner door panel (Fig. 16).
- (3) Remove bolt attaching regulator to inner door panel (Fig. 17).
- (4) Lift regulator upward to disengage bolts from door inner panel.
- (5) Disengage power window regulator harness connector, if equipped.
- (6) Remove regulator through access hole in door.

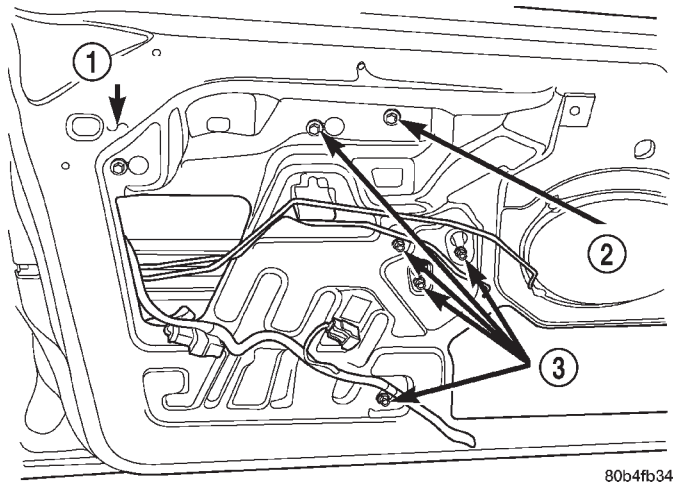


Fig. 16 Front Door Regulator Bolts

- 1 - FRONT DOOR
- 2 - REMOVE BOLT
- 3 - LOOSEN BOLTS

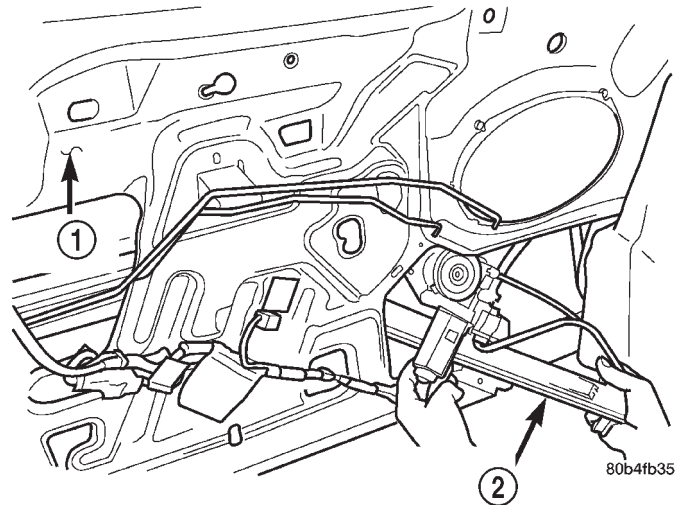


Fig. 17 Front Door Window Regulator

- 1 - FRONT DOOR
- 2 - REGULATOR

INSTALLATION

- (1) Position regulator in door through access hole.
- (2) Engage power window regulator harness connector, if equipped.
- (3) Lift regulator upward and engage bolts in door inner panel key hole slots.
- (4) Install bolt attaching regulator to inner door panel.
- (5) Tighten bolts attaching regulator to inner door panel.
- (6) Install front door glass, refer to (Refer to 23 - BODY/DOOR - FRONT/GLASS RUN CHANNEL - INSTALLATION).